

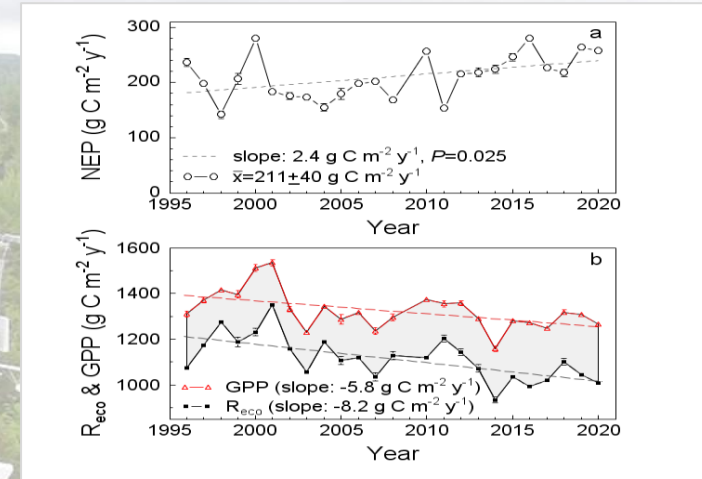
# 25-year Carbon flux record in an evergreen forest

## Objective

We examined whether carbon storage at the Howland Forest AmeriFlux site was changing through time using eddy flux and biomass measurements. The forest was registered as a Climate Action Reserve (CAR681) in 2013 to provide carbon offset credits.

## Research

Carbon storage over the last 25 years has averaged over  $200 \text{ g C m}^{-2} \text{ y}^{-1}$  and is increasing, even though this period included the warmest, wettest, and driest years in the last 125. Respiration and GPP have declined with forest age.



## Impact

The long-term persistence and increasing trend of C storage at the unmanaged Howland Forest AmeriFlux site bode well for the use of forests as Natural Climate Solutions.